

Annual Production Sale
FRIDAY, APRIL 8, 2022

1:00 PM MST • AT THE RANCH, FAITH, SD



SELLING 55 REGISTERED BLACK ANGUS YEARLING BULLS,
12 REGISTERED YEARLING HEIFERS & 8 COMMERCIAL YEARLING HEIFERS



TURTLE CREEK
ANGUS

Hugh Ingalls
Centennial Angus

www.turtlecreekangus.com

Annual Production Sale

FRIDAY, APRIL 8, 2022

1:00 PM MST • AT THE RANCH, FAITH, SD

Herd Health

- **Birth:** All calves are given Ultra bac C/D
- **Branding:** Vision 7 Somnus, Nasalgen 3 + PMH & Dectomax injectable
- **Preconditioning:** Vision 7 Somnus & Vista Once SQ
- **Weaning:** One Shot BVD, Inforce 3 & Dectomax Injectable
They will be fertility tested, poured and have their Fusogard foot rot shots end of March.
- **Heifers:** were given Bovi-Shield Gold FP5 VL5 on 3-3-2022
- **Herd health is monitored by:**
Dr. Tammy Winger, Faith Veterinary Services.. 605-967-2212
Scoggin Veterinary Services 605-892-4242

Retained Interest

Turtle Creek Angus or Ingalls Centennial Angus will be retaining a one-third revenue sharing interest on every bull selling in the sale. Full possession and salvage value sells on all bulls.

Liability

All persons who attend the sale do so at their own risk. Turtle Creek Angus and Ingalls Centennial Angus assumes no liability, legal or otherwise, for any accidents which may occur.

Guarantee

Bulls are guaranteed for the 1st breeding season.

Delivery

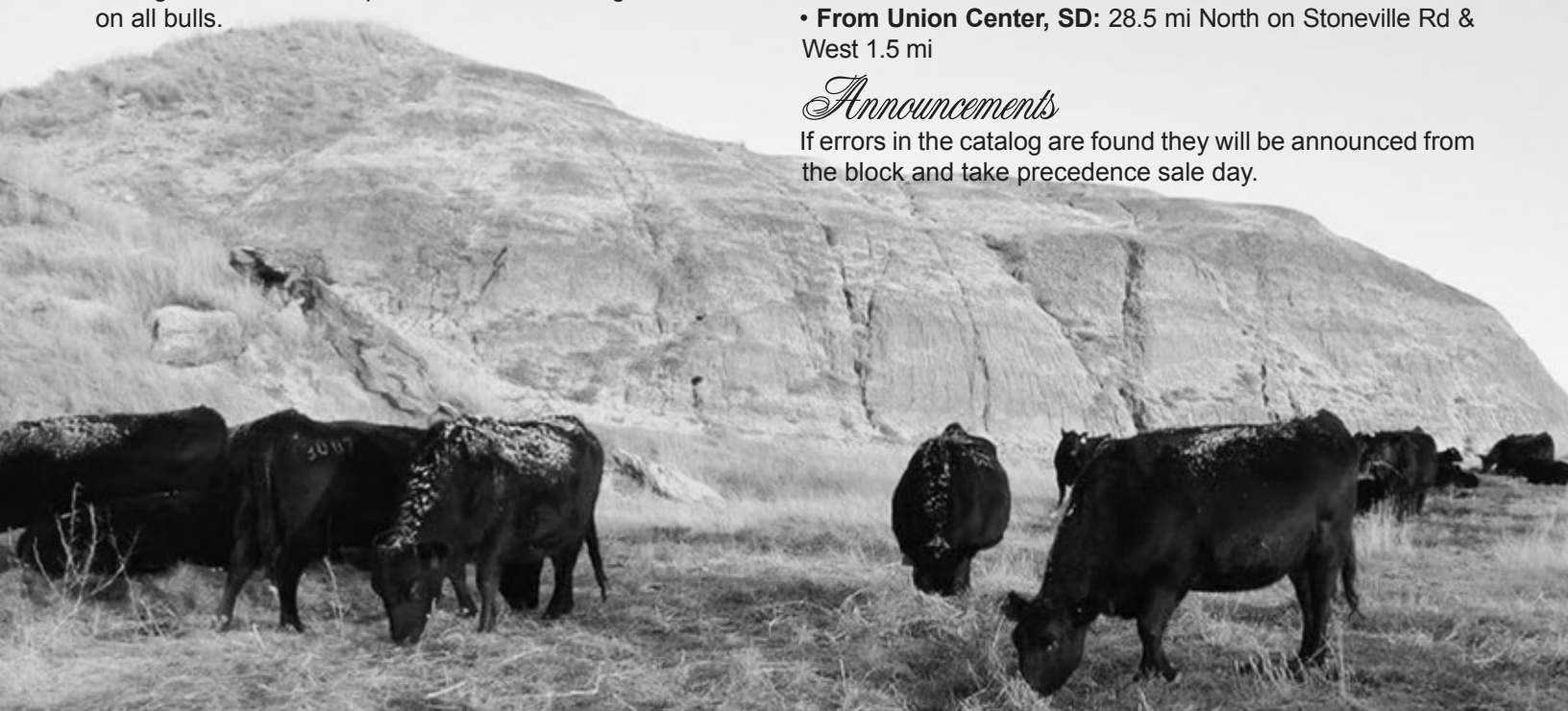
We will begin delivering bulls a week or two following the sale. Arrangements for heifer pick-up or delivery can be made on sale day.

Ranch Directions

- **From Faith, SD:** 30 mi West on Hwy 212, 4 mi South on Stoneville Rd & West 1.5 mi
- **From Newell, SD:** 44.5 mi West on Hwy 212, 4 mi South on Stoneville Rd & West 1.5 mi
- **From Union Center, SD:** 28.5 mi North on Stoneville Rd & West 1.5 mi

Announcements

If errors in the catalog are found they will be announced from the block and take precedence sale day.



CONTACT INFORMATION

Ty & Kari Dieters

16803 Stoneville Rd, Faith, SD 57626
605-748-2404 (H) 605-359-3609(C)

Hugh & Eleanor Ingalls

16801 Stoneville Rd, Faith, SD 57626
605-748-2277 (H) 605-490-3901 (C)

turtlecreekangus@hotmail.com | turtlecreekangus.com | Facebook: Turtle Creek Angus



Auctioneer
Tanner Hewitt

Sale Day
Representatives

Béau Ravellette
RPI Promotions
605-685-8155

Scott Dirk
Tri-State Livestock News
605-380-6024

Ryan Casteel
Cattle Business Weekly
605-423-6000
Tyson Hewitt
605-206-0034

Catalog Design
RPI Promotions

Bull Videos
Cassie Hicks
Branding Impressions
605-347-0878

Bid Online
The Livestock Link
(See page 2)



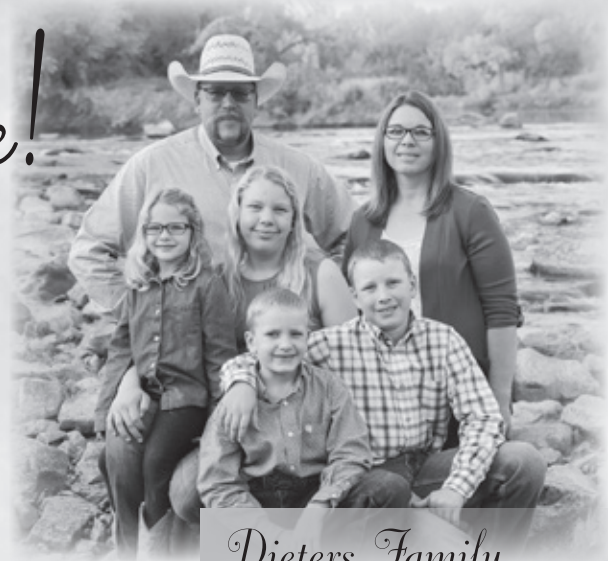
Welcome!

Greetings friends and valued customers & welcome to our annual production sale. We hope your Spring is going well and finds you in good health.

We are very pleased with this years offering of bulls and are excited for you to evaluate them. As a lot of you know we really focus on the Maternal power in our program and try to check as many boxes as we can to produce the most complete bulls and females that will perform in our operation as well as our customers herds.

We have implemented some new things this year to the sale. We have added a couple packages of replacement heifers to the sale, one registered and one commercial. The bulls have been videoed and a link can be found on our website: turtlecreekangus.com or at Turtle Creek Angus on Facebook. The sale will also be offered live on The Livestock Link.

On behalf of Turtle Creek Angus, we thank you for your consideration of our program and look forward to seeing you Sale Day! Please feel free to stop by or contact us with any questions.



Dieters Family

Ty & Kari Dieters family

Hi Folks!

Well, another year is roaring by. Hope everything is working out the way you had it planned.

We are having a bull sale again. The only changes are the date, which is April 8th, and the fact that Ty will have the majority of the bulls this year. We hope you can join us at the same old place for a steak out of the pot, off a clean fork.

We are having a drawing again for a bred heifer and a yearling heifer, so bring the young people to get in on that part of the day. The yearling heifer drawing will be for the younger set, and the bred heifer for the older folks. Come early and plan to spend the day looking at the bulls, visiting with your neighbors and enjoying lunch. Bulls can be seen starting at 9 AM, lunch at noon, and the sale starts at 1 PM.

Thank you for your past participation and enjoy the day.



Hugh & Eleanor

Hugh Ingalls

**All registered animals are have been tested for parentage,
Angus GS & are defect free**

REFERENCE SIRES

Deep Creek Holiday 836

BD: 01/22/2018 Reg: 19294633 Tattoo: 836

{ Tombstone 050

Sitz Upward 307R
Mytty Countess 906

DEEP CREEK DOC HOLIDAY 433

Sire { Deep Creek MP Lass 933

Ma & Pa Feature Presentation
Deep Creek 193 Lass 516

{ N F Alliance 348-3

Sitz Alliance 6595
N F Clova Pride 18096

MILLARS BALERICA BREEZE 602

Dam { Millars Balerica Breeze 4502

C A Future Direction 5321
Millars Balerica 261

BW	WW	YW	Milk
+1.7	+70	+113	+28



Riverbend None Better Y095

BD: 01/31/2011 Reg: *16997078 Tattoo: Y095

{ Connealy Consensus

KMK Alliance 6595 187
Blinda of Conanga 004

CONNELY CONSENSUS 7229

Sire { Blue Lilly of Conanga 16

Woodhill Admiral 77K
Blue Cash of Conanga 6020

{ S S Objective T510 OT26

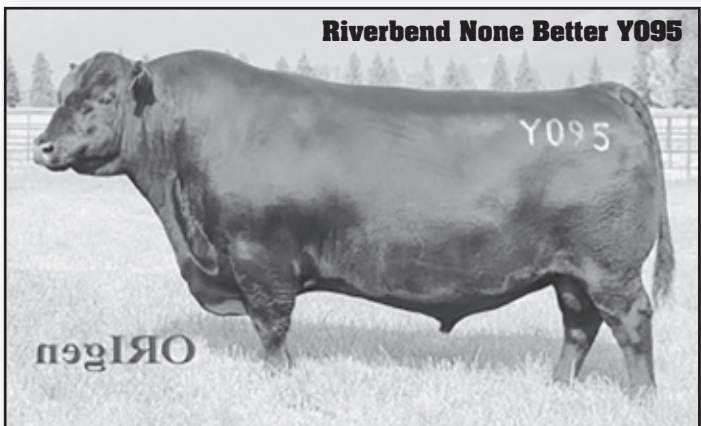
S S Traveler 6807 T510
S S Miss Rita R011 7R8

CCC BLACKBIRD 9101

Dam { Riverbend Blackbird 4301

G A R Grid Maker
Riverbend Blackbird 2204

BW	WW	YW	Milk
+3.0	+66	+103	+26



Bid Online! *The* **Livestock** Link

If you are unable to attend the sale, you can register to watch or bid online through The Livestock Link by following these instructions:

Livestock Videoing • Video Sales
• Bid-by-Click Online Sales

To view events go to: www.TheLivestockLink.com

- Visit our website, www.thelivestocklink.com.
- Click the "Auctions" tab.
- Click on "Click Here to Register."
- Enter your e-mail address and password, and fill out all your contact information.
- Fill out your banking information. *If you are only viewing the sale and do not wish to bid, this information can be left blank.*
- Check the checkbox at the bottom of the page that says "I'm not a robot" to prove you are a real person.
- Click "Register" at the bottom of the page.
- You will receive an e-mail with a link to activate your account.
- Please register to bid at least 24 hours in advance of the sale.

You will receive an e-mail when you are approved for bidding. All applications will be reviewed and processed promptly. You will receive a bidder number only after you have made a purchase in the sale, and that number will only be used at that sale. When the sale is completed, please contact the sale owner or manager for instructions of payment and delivery of your purchase.

To use our service, you must have access to high speed internet.

Questions or need help?

→ Contact Aaron Friedt at (701) 590-9597 or Support at (605) 920-9261 ←

www.TheLivestockLink.com

REFERENCE SIRES

Basin Rainmaker 4404

BD: 03/19/2014 Reg: *17913751 Tattoo: 4404

{ Basin Rainmaker P175
BASIN RAINMAKER 2704
Sire { Basin Erica 7520 BV
 Basin Rainmaker 747L
 Basin Blackcap Lady 693L
 Basin Franchise P142
 Basin Erica 8R02 BV
 Vermilion Payweight J847
 Basin Lucy 3829
BASIN JOY 1036
Dam { Basin Joy 566T
 B P F Special Focus 504
 Basin Joy 204R

BW	WW	YW	Milk
+1.2	+59	+107	+37



Basin Rainmaker 4404

Connealy Stimulus 348

BD: 02/09/2010 Reg: 16750486 Tattoo: 0627

{ H A Power Alliance 1025
CONNELY STIMULUS 8419
Sire { Black Creea of Conanga 5332
 Sitz Alliance 6595
 H A Rito Lady 4167
 G A R Grid Maker
 Black Crust of Conanga
 Papa Universe 515
BLACK CAY OF CONANGA 5349
Dam { Black Sweetie of Conanga
 Papa Equator 2928
 PLD Eriskay Papa 011
 Hoff Hi Flyer S C 7134
 Black Barbie of Conanga

BW	WW	YW	Milk
+0.4	+60	+92	+23

Centennial Resource 155

BD: 03/12/2017 Reg: 18958162 Tattoo: 7260

{ S A V Resource 1441
1441 RESOURCE 6804 RS
Sire { OW Eileenmere 6804 RS
 Rito 707 of Ideal 3407 7075
 S A V Blackcap May 4136
 Connealy Onward
 598 Eileenmere 8996 R S
 Centennial Prime 479
BANDOLIER EBLINETTE 11-862
Dam { Bardolier Eblinette 08-3170
 HIGH PRIME 4037
 Creeola 04-162
 Prairie Blackbird Focus 03
 Bardolier Eblinette 03-851

BW	WW	YW	Milk
+2.0	+61	+112	+19

Don't buy an **imposter.**

Not all "Angus" bulls are **REGISTERED** Angus bulls.



If you see this logo in conjunction with an individual animal or group of animals, you know that that animal is registered with the American Angus Association and backed by the power of **data, programs** and **pedigrees** of the Association.

Invest wisely in those that carry the **Powered By Angus** logo.

Look for the **REGISTRATION NUMBER.**
 For more information on the Powered By Angus program, visit:
Angus.org/PBA.



REFERENCE SIRES

Basin Payweight 1682

BD: 02/11/2011 Reg: #+*17038724 Tattoo: 1682

{ Vermillion Payweight J847

Vermillion Dateline 7078
Vermillion Lass 7969

BASIN PAYWEIGHT 006S

Sire { Basin Lucy 3829

C A Future Direction 5321
Basin Lucy 178E

{ HARB Pendleton 765 J H

S A V Final Answer 0035
H A R B Black Lady 375 J H

21AR O LASS 7017

Dam { 21AR O Lass F24A

VDAR Legend 1281
21AR O Lass A24

BW	WW	YW	Milk
+0.6	+66	+118	+31



Basin Payweight 1682

Sitz Resilient 10208

BD: 02/15/2018 Reg: *19057457 Tattoo: 10208

{ Mohnen Substantial 272

Benfield Substance 8506
Mohnen Glyn Mawr Elba 1758

SITZ STELLAR 726D

Sire { SITZ Pride 200B

Connealy Final Product
Sitz Pride 308Y

{ Sitz Top Game 561X

GDAR Game Day 449
Sitz Pride 88T

SITZ MISS BURGESS 1856

Dam { Sitz Miss Burgess 4381

Sitz Rainmaker 10899
Sitz Miss Burgess 1609

BW	WW	YW	Milk
+0.6	+79	+142	+23



Sitz Resilient 10208

JK High Point 745

BD: 01/09/2017 Reg: 18793066 Tattoo: 745

{ Vin-Mar Johnny Cash 3513

Barstow Cash
Vin-Mar Eloise 0159

HIGH POINT RING OF FIRE 5071

Sire { High Point Blackbird 3009

TC Touchdown 772
River Hills Blackbird T863

{ S A Broadside 1411

TC Broadside 967
S A Queen Idelette 204

J K BLACKBIRD 408

Dam { J K Ms Blackbird 018

Sitz Upward 307R
Baldrige Blackbird M565

BW	WW	YW	Milk
-0.3	+85	+149	+24

Sitz RLS Investment 12226

BD: 01/22/2016 Reg: +*18650924 Tattoo: 12226

{ Connealy Final Product

Connealy Product 568
Ebonista of Conanga 471

SITZ INVESTMENT 660Z

Sire { Sitz Ellunas Elite 656T

Sitz Upward 307R
Sitz Ellunas Elite 35M

{ Sitz Upward 307R

Connealy Onward
Sitz Henrietta Pride 81M

SITZ RLS EISA EVERGREEN 1720

Dam { Sitz RLS Eisa Evergreen 2375

Sitz Rainmaker 6169
R L S Eisa Evergreen 2829

BW	WW	YW	Milk
-0.7	+59	+102	+17

K6 Coal Train 1504

BD: 02/26/2015 Reg: 18294099 Tattoo: 1504

{ MOGCK Sure Shot

Mytty In Focus
Mogck Black Lass 2065

MOGCK BULLSEYE

Sire { Mogck Mary 1255

K C F Bennett Coalition SCC
Mogck Mary C 1757

{ S A V Final Answer 0035

Sitz Traveler 8180
S A V Emulous 8145

K-6 MISS FINAL ANSWER 914 DK

Dam { K-6 Miss Nebraska 707 D K

Da Kitch Nebraska 53R
K-6 Miss Twister 510-902

BW	WW	YW	Milk
+2.9	+70	+132	+27

Centennial Bismarck 165

BD: 03/03/2015 Reg: 18267538 Tattoo: 5008

{ S A V Bismarck 5682

G A R Grid Maker
S A V Abigale 0451

T C A R BISMARCK 3004

Sire { T C A R Marie 1007

Sitz Upward 307R
TCAR Winnie Blackbird 7003

{ N F Supreme 73-3

Marcys 95 Supreme 7
M A C Linda 1892

PRAIRIE ERICA 11-933

Dam { Prairie Erica 09-365

TC Franklin 619
Prairie Erica 03-969

BW	WW	YW	Milk
+3.0	+75	+131	+27

REFERENCE SIREs

Centennial Investment 240

BD: 03/05/2019 Reg: 19570226 Tattoo: 9103

{Sitz Investment 660Z
SITZ RLS INVESTMENT 12226
 Sire {Sitz RLS Eisa Evergreen 1720

Connealy Final Product
 Sitz Ellunas Elite 656T
 Sitz Upward 307R
 Sitz RLS Eisa Evergreen 2375

{Connealy In Focus 4925
PRAIRIE BLACKBIRD 12-833
 Dam {Prairie Blackbird 08-274

Mytty In Focus
 Black Cana of Conanga 206
 Centennial Alliance 1128
 Prairie Blackbird 020018

BW	WW	YW	Milk
-1.2	+68	+100	+18

Centennial Unmistakable 558

BD: 03/05/2019 Reg: 19570296 Tattoo: 9100

{O C C Unmistakable 946U
SITZ UNMISTAKABLE 11796
 Sire {SITZ Ellunas Elite 1374

O C C Paxton 730P
 FCC Revolution Rose 2476
 Sitz Investment 660Z
 SITZ Ellunas Elite 331

{V D A R Black Train 1243
MISS PAULINE 15-372
 Dam {Miss Pauline 13-897

Crook Mt Really Windy 141
 V D A R Lass 5714
 Connealy Stimulus 348
 Miss Pauline 08-6127

BW	WW	YW	Milk
+1.9	+63	+114	+28

Centennial Winston 566

BD: 02/19/2017 Reg: 18984148 Tattoo: 7021

{V D A R Churchill 1063
V D A R WINSTON 2165
 Sire {V D A R Lass 3114

DFA Hero 6017
 V D A R Forever Lady 1409
 Crook Mt Really Windy 141
 V D A R Lass 5714

{Centennial Windy 058
BANDOLIER FANNY 15-748
 Dam {Bandolier Fanny 07-391

V D A R Really Windy 4097
 Black Blossom 10-847
 Centennial Golden Freedom
 Bandolier Fanny 03-145

BW	WW	YW	Milk
+1.1	+51	+84	+14

Centennial Windy 741

BD: 03/19/2007 Reg: 15872148 Tattoo: 7349

{Crook Mt Really Windy 141
B BAR WINDY 104
 Sire {B Bar Forever Lady 1572

A A R Really Windy 1205
 Revolution 155 of Crook MT
 Toebben Alliance C902
 B Bar Forever Lady 3309

{Centennial Ultra 867
CREEOLA 97-093
 Dam {Creeola N T 716

O S U 6T6 Ultra
 Erica Black Beauty 88
 New Trend Power 4
 Creeola G

BW	WW	YW	Milk
-0.3	+28	+45	+23

Centennial Winston 547

BD: 02/25/2017 Reg: 18984007 Tattoo: 7050

{V D A R Churchill 1063
V D A R WINSTON 2165
 Sire {V D A R Lass 3114

DFA Hero 6017
 V D A R Forever Lady 1409
 Crook Mt Really Windy 141
 V D A R Lass 5714

{V D A R Black Train 1243
EBLINETTE 15-339
 Dam {Eblinette 13-554

Crook Mt Really Windy 141
 V D A R Lass 5714
 Sitz Upward 11950
 B Eblinette 05-158

BW	WW	YW	Milk
+1.2	+50	+92	+32

V D A R Winston 2165

BD: 01/08/2015 Reg: 18234111 Tattoo: 2165

{DFA Hero 6017
V D A R CHURCHILL 1063
 Sire {V D A R Forever Lady 1409

Hero 6267 of R R 2418
 D F A Ellura 502
 HA Windfall 6011
 V D A R Forever Lady 9770

{Crook Mt Really Windy 141
V D A R LASS 3114
 Dam {V D A R Lass 5714

A A R Really Windy 1205
 Revolution 155 of Crook MT
 Leachman Right Time
 V D A R Lass 5186

BW	WW	YW	Milk
-1.5	+41	+76	+21

VDAR Mirror Image 2047

BD: 01/02/2017 Reg: 18820780 Tattoo: 2047

{H A Image Maker 0415
W R A MIRROR IMAGE T10
 Sire {W R A Eileen Bar 115P

Hero 6267 of R R 2418
 H A Rito Blackcap 9038
 CAR Duke 104
 W R A Eileen Bar 115M

{KA Black Cedar 080
V D A R LASS 5880
 Dam {V D A R Lass 3106

Cole Creek Black Cedar 46P
 KA Miss Wix 8021
 V D A R Really Windy 4097
 V D A R Lass 5700

BW	WW	YW	Milk
-2.0	+46	+77	+33



TURTLE CREEK ANGUS SALE BULLS



TCAR Two Guns 1004

BD: 2/18/21 Reg: 20104812 Freeze Brand: 1004

{ Deep Creek Doc Holiday 433
DEEP CREEK HOLIDAY 836
 Sire { Millars Balerica Breeze 602

Tombstone 050
 Deep Creek MP Lass 933
 N F Alliance 348-3
 Millars Balerica Breeze 4502

{ Riverbend None Better Y095
TCAR QUAILIE 9005
 Dam { T C A R Quailie 1008

Connealy Consensus 7229
 CCC Blackbird 9101
 HARB Pendleton 765 J H
 T C A R Quailie 9016

Birth Wt.	WW	205 Wt.
80	690	734

BW	WW	YW	Milk
-1.5	+62	+106	+26

Weaning Ratio: 110

Dam: 1@110



TCAR TWO GUNS 1004 AS A CALF



TCAR HOLIDAY 1005 AS A CALF



TCAR Holiday 1005

BD: 2/19/21 Reg: 20223590 Freeze Brand: 1005

{ Deep Creek Doc Holiday 433
DEEP CREEK HOLIDAY 836
 Sire { Millars Balerica Breeze 602

Tombstone 050
 Deep Creek MP Lass 933
 N F Alliance 348-3
 Millars Balerica Breeze 4502

{ Sitz Bullseye 9994
TCAR WINNIE BLACKBIRD 9012
 Dam { TCAR Winnie Blackbird 2001

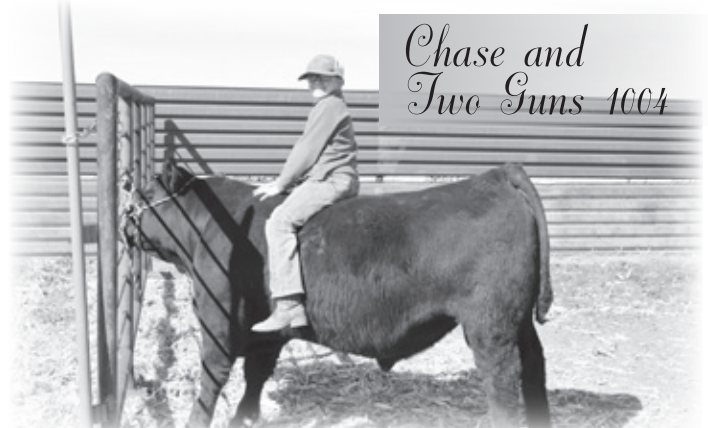
Mogck Bullseye
 Sitz Pride 0128
 S A V Final Answer 0035
 TCAR Winnie Blackbird 0004

Birth Wt.	WW	205 Wt.
74	616	665

BW	WW	YW	Milk
+2.0	+89	+151	+21

Weaning Ratio: 100

Dam: 1@100



TURTLE CREEK ANGUS SALE BULLS



TCAR Holiday 1008

BD: 2/28/21 Reg: 20223591 Freeze Brand: 1008

{ Deep Creek Doc Holiday 433
DEEP CREEK HOLIDAY 836
 Sire { Millars Balerica Breeze 602

{ Riverbend None Better Y095
TCAR QUAILIE 9039
 Dam { TCAR Quailie 5021

Tombstone 050
 Deep Creek MP Lass 933
 N F Alliance 348-3
 Millars Balerica Breeze 4502
 Connealy Consensus 7229
 CCC Blackbird 9101
 T C A R Bismarck 3004
 T C A R Quailie 8004

Birth Wt.	WW	205 Wt.	BW	WW	YW	Milk
87	630	697	+3.3	+77	+113	+24

Weaning Ratio: 105 Dam: 1@105



TCAR Resilient 1012

BD: 3/4/21 Reg: 20223592 Freeze Brand: 1012

{ Sitz Stellar 726D
SITZ RESILIENT 10208
 Sire { Sitz Miss Burgess 1856

{ Centennial Windy 058
BANDOLIER FANNY 15-748
 Dam { Bandolier Fanny 07-391

Mohnen Substantial 272
 SITZ Pride 200B
 Sitz Top Game 561X
 Sitz Miss Burgess 4381
 V D A R Really Windy 4097
 Black Blossom 10-847
 Centennial Golden Freedom
 Bandolier Fanny 03-145

Birth Wt.	WW	205 Wt.	BW	WW	YW	Milk
77	610	617	-1.4	+55	+98	+24

Weaning Ratio: 93 Dam: 5@95



TCAR Resilient 1016

BD: 3/6/21 Reg: 20223593 Freeze Brand: 1016

{ Sitz Stellar 726D
SITZ RESILIENT 10208
 Sire { Sitz Miss Burgess 1856

{ Centennial Windy 058
REVO EBLINETTE 15-069
 Dam { Revo Eblinette 10-3132

Mohnen Substantial 272
 SITZ Pride 200B
 Sitz Top Game 561X
 Sitz Miss Burgess 4381
 V D A R Really Windy 4097
 Black Blossom 10-847
 Nevermore 8138
 Revo Eblinette 03-578

Birth Wt.	WW	205 Wt.	BW	WW	YW	Milk
75	676	689	-0.1	+81	+136	+17

Weaning Ratio: 103 Dam: 5@96



TCAR Winston 1023

BD: 3/7/21 Reg: 20227443 Freeze Brand: 1023

{ V D A R Churchill 1063
V D A R WINSTON 2165
 Sire { V D A R Lass 3114

{ Centennial Windy 675
EISA BESSIE 15-653
 Dam { Eisa Bessie 06-294

DFA Hero 6017
 V D A R Forever Lady 1409
 Crook Mt Really Windy 141
 V D A R Lass 5714
 WMR Windy 340
 Revo Eblinette 06-3132
 Connealy Danny Boy
 Eisa Bessie 02-962

Birth Wt.	WW	205 Wt.	BW	WW	YW	Milk
86	642	656	-1.0	+49	+82	+19

Weaning Ratio: 98 Dam: 5@98



TCAR Stimulus 1024

BD: 3/8/21 Reg: 20223623 Freeze Brand: 1024

{ Connealy Stimulus 8419
CONNELLY STIMULUS 348
 Sire { Black Cay of Conanga 5349

{ Foos Right Time 135
QUEEN BEATRICE 13-937
 Dam { Queen Beatrice 09-3117

H A Power Alliance 1025
 Black Creeza of Conanga 5332
 Papa Universe 515
 Black Sweetie of Conanga
 V D A R Right Time 3045
 Blackcap 134 of Crook Mt
 S A V Final Answer 0035
 Queen Beatrice 03-832

Birth Wt.	WW	205 Wt.	BW	WW	YW	Milk
87	632	649	-1.0	+54	+84	+28

Weaning Ratio: 97 Dam: 7@101 Pathfinder



TURTLE CREEK ANGUS SALE BULLS

(~) TCAR None Better 1036

BD: 3/11/21 Reg: 20223594 Freeze Brand: 1036

{ Connealy Consensus 7229 Connealy Consensus
Blue Lilly of Conanga 16
RIVERBEND NONE BETTER Y095
Sire { CCC Blackbird 9101 S S Objective T510 OT26
Riverbend Blackbird 4301

{ S A V Final Answer 0035 Sitz Traveler 8180
S A V Emulous 8145
TCAR WINNIE BLACKBIRD 2001
Dam { TCAR Winnie Blackbird 0004 S A V Net Worth 4200
TCAR Winnie Blackbird 7003

Birth Wt.	WW	205 Wt.	BW	WW	YW	Milk
97	610	632	+4.2	+61	+103	+28

Weaning Ratio: 95

Dam: 8@105



(~) TCAR Rainmaker 1037

BD: 3/11/21 Reg: 20223595 Freeze Brand: 1037

{ Basin Rainmaker 2704 Basin Rainmaker P175
Basin Erica 7520 BV
BASIN RAINMAKER 4404
Sire { Basin Joy 1036 Basin Payweight 107S
Basin Joy 566T

{ Basin Payweight 1682 Basin Payweight 006S
21AR O Lass 7017
TCAR WINNIE BLACKBIRD 6020
Dam { TCAR Winnie Blackbird 0004 S A V Net Worth 4200
TCAR Winnie Blackbird 7003

Birth Wt.	WW	205 Wt.	BW	WW	YW	Milk
83	636	660	+0.3	+74	+121	+35

Weaning Ratio: 99

Dam: 4@99



(~) TCAR Rainmaker 1039

BD: 3/11/21 Reg: 20223596 Freeze Brand: 1039

{ Basin Rainmaker 2704 Basin Rainmaker P175
Basin Erica 7520 BV
BASIN RAINMAKER 4404
Sire { Basin Joy 1036 Basin Payweight 107S
Basin Joy 566T

{ V D A R Really Windy 4097 A A R Really Windy 1205
V D A R Blackbird 2031
PATTY 13-140
Dam { Patty 11-746 V D A R Right Time 3045
Patty 07-366

Birth Wt.	WW	205 Wt.	BW	WW	YW	Milk
96	634	658	+0.7	+61	+102	+31

Weaning Ratio: 99

Dam: 7@101



(~) TCAR Stimulus 1040

BD: 3/11/21 Reg: 20223597 Freeze Brand: 1040

{ Connealy Stimulus 8419 H A Power Alliance 1025
Black Creaea of Conanga 5332
CONNEALY STIMULUS 348
Sire { Black Cay of Conanga 5349 Papa Universe 515
Black Sweetie of Conanga

{ V D A R Really Windy 4097 A A R Really Windy 1205
V D A R Blackbird 2031
EULAMERE 14-266
Dam { Eulamere 12-015 Final Answer 924 SDG
Eulamere 10-514

Birth Wt.	WW	205 Wt.	BW	WW	YW	Milk
85	620	643	+0.0	+60	+97	+20

Weaning Ratio: 97

Dam: 5@91



(~) TCAR Payweight 1041

BD: 3/12/21 Reg: 20223598 Freeze Brand: 1041

{ Basin Payweight 006S Vermilion Payweight J847
Basin Lucy 3829
BASIN PAYWEIGHT 1682
Sire { 21AR O Lass 7017 HARB Pendleton 765 J H
21AR O Lass F24A

{ Basin Excitement Basin Expedition R156
Basin Lady S532 AK
TCAR QUAILIE 5016
Dam { T C A R Quailie 7006 S A V Net Worth 4200
Quailie 99-659

Birth Wt.	WW	205 Wt.	BW	WW	YW	Milk
80	686	715	-0.4	+67	+113	+27

Weaning Ratio: 107

Dam: 5@99



TURTLE CREEK ANGUS SALE BULLS



TCAR None Better 1044

BD: 3/12/21 Reg: 20223599 Freeze Brand: 1044

{ Connealy Consensus 7229
RIVERBEND NONE BETTER Y095
 Sire { CCC Blackbird 9101

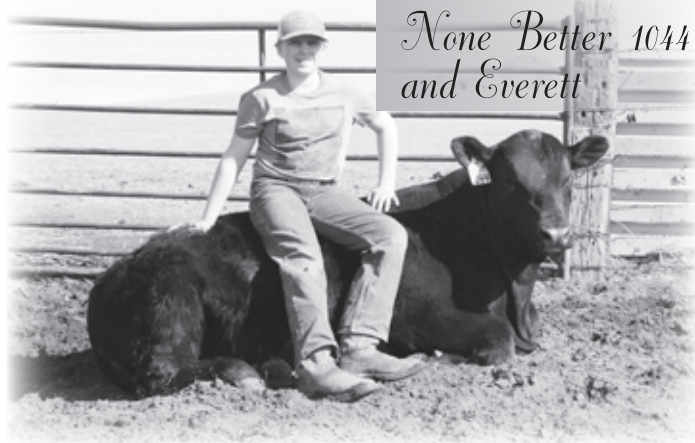
Connealy Consensus
 Blue Lilly of Conanga 16
 S S Objective T510 0T26
 Riverbend Blackbird 4301

{ Basin Payweight 1682
TCAR ELSA 6001
 Dam { T C A R Elsa 4008

Basin Payweight 006S
 21AR O Lass 7017
 S A V Bismarck 5682
 T C A R Quailie 1008

Birth Wt.	WW	205 Wt.	BW	WW	YW	Milk
85	626	652	-1.5	+51	+97	+39

Weaning Ratio: 98 Dam: 4@101 **ANGUS**



TCAR Rainmaker 1046

BD: 3/12/21 Reg: 20223600 Freeze Brand: 1046

{ Basin Rainmaker 2704
BASIN RAINMAKER 4404
 Sire { Basin Joy 1036

Basin Rainmaker P175
 Basin Erica 7520 BV
 Basin Payweight 107S
 Basin Joy 566T

{ V D A R Black Train 1243
BANDOLIER EBLINETTE 15-369
 Dam { Bardolier Eblinette 13-869

Crook Mt Really Windy 141
 V D A R Lass 5714
 EVENSON New Frontier 097
 Bardolier Eblinette 08-4113

Birth Wt.	WW	205 Wt.	BW	WW	YW	Milk
95	698	727	+1.2	+58	+107	+40

Weaning Ratio: 109 Dam: 3@107 **ANGUS**



TCAR None Better 1049

BD: 3/13/21 Reg: 20223601 Freeze Brand: 1049

{ Connealy Consensus 7229
RIVERBEND NONE BETTER Y095
 Sire { CCC Blackbird 9101

Connealy Consensus
 Blue Lilly of Conanga 16
 S S Objective T510 0T26
 Riverbend Blackbird 4301

{ EF Commando 1366
TCAR WINNIE BLACKBIRD 7010
 Dam { TCAR Winnie Blackbird 0004

EF Complement 8088
 Riverbend Young Lucy W1470
 S A V Net Worth 4200
 TCAR Winnie Blackbird 7003

Birth Wt.	WW	205 Wt.	BW	WW	YW	Milk
84	596	638	+1.9	+57	+91	+24

Weaning Ratio: 96 Dam: 3@102 **ANGUS**



TCAR Holiday 1051

BD: 3/13/21 Reg: 20223602 Freeze Brand: 1051

{ Deep Creek Doc Holiday 433
DEEP CREEK HOLIDAY 836
 Sire { Millars Balerica Breeze 602

Tombstone 050
 Deep Creek MP Lass 933
 N F Alliance 348-3
 Millars Balerica Breeze 4502

{ V D A R Black Train 1243
ERICA 18-269
 Dam { Erica 12-048

Crook Mt Really Windy 141
 V D A R Lass 5714
 V D A R Really Windy 4097
 Erica 10-786

Birth Wt.	WW	205 Wt.	BW	WW	YW	Milk
74	604	669	-0.2	+59	+98	+24

Weaning Ratio: 100 Dam: 1@100 **ANGUS**

TURTLE CREEK ANGUS SALE BULLS



TCAR Holiday 1052

BD: 3/13/21 Reg: 20223603 Freeze Brand: 1052

{ Deep Creek Doc Holiday 433
DEEP CREEK HOLIDAY 836
 Sire { Millars Balerica Breeze 602

Tombstone 050
 Deep Creek MP Lass 933
 N F Alliance 348-3
 Millars Balerica Breeze 4502

{ HARB Pendleton 765 J H
T C A R QUAILIE 1008
 Dam { T C A R Quailie 9016

S A V Final Answer 0035
 H A R B Black Lady 375 J H
 D R Tradition 575
 Quailie 00-991

Birth Wt.	WW	205 Wt.	BW	WW	YW	Milk
94	700	754	+1.5	+60	+106	+27

Weaning Ratio: 113

Dam: 9@102



TCAR None Better 1053

BD: 3/13/21 Reg: 20223604 Freeze Brand: 1053

{ Connealy Consensus 7229
RIVERBEND NONE BETTER Y095
 Sire { CCC Blackbird 9101

Connealy Consensus
 Blue Lilly of Conanga 16
 S S Objective T510 OT26
 Riverbend Blackbird 4301

{ EVENSON New Frontier 097
WESTERN HILDA 13-887
 Dam { Western Hilda 08-647

Rally New Frontier 5233
 Evenson Blackbird 924
 Centennial Golden Freedom
 Western Hilda 06-259

Birth Wt.	WW	205 Wt.	BW	WW	YW	Milk
84	618	646	-1.5	+56	+91	+25

Weaning Ratio: 97

Dam: 7@99



TCAR Rainmaker 1054

BD: 3/13/21 Reg: 20223605 Freeze Brand: 1054

{ Basin Rainmaker 2704
BASIN RAINMAKER 4404
 Sire { Basin Joy 1036

Basin Rainmaker P175
 Basin Erica 7520 BV
 Basin Payweight 107S
 Basin Joy 566T

{ Connealy Stimulus 348
T C A R QUAILIE 2016
 Dam { Quailie 00-991

Connealy Stimulus 8419
 Black Cay of Conanga 5349
 Hero 6267 of R R 2418
 Quailie 99-659

Birth Wt.	WW	205 Wt.	BW	WW	YW	Milk
98	588	614	+1.4	+61	+103	+37

Weaning Ratio: 92

Dam: 8@94



TCAR Mirror Image 1056

BD: 3/13/21 Reg: 20223606 Freeze Brand: 1056

{ W R A Mirror Image T10
VDAR MIRROR IMAGE 2047
 Sire { V D A R Lass 5880

H A Image Maker 0415
 W R A Eileen Bar 115P
 KA Black Cedar 080
 V D A R Lass 3106

{ Centennial Windy 04
EBLINETTE 14-725
 Dam { Eblinette 07-1129

V D A R Really Windy 4097
 Dakota Eblinette 10-293
 Buffalos Conclusive BN46
 Eblinette 00-634

Birth Wt.	WW	205 Wt.	BW	WW	YW	Milk
91	588	614	+1.2	+47	+83	+31

Weaning Ratio: 92

Dam: 4@98



TCAR Coal Train 1059

BD: 3/14/21 Reg: 20223621 Freeze Brand: 1059

{ Mogck Bullseye
K6 COAL TRAIN 1504
 Sire { K-6 Miss Final Answer 914 DK

MOGCK Sure Shot
 Mogck Mary 1255
 S A V Final Answer 0035
 K-6 Miss Nebraska 707 D K

{ Centennial Improvement 581
BLACKBIRD ERICA 10-654
 Dam { Blackbird Erica 06-301

W C 4480 Improvement 1C09
 Erica 05-288
 Centennial Alliance 1128
 Blackbird Erica 03-295

Birth Wt.	WW	205 Wt.	BW	WW	YW	Milk
88	644	698	+2.2	+64	+115	+24

Weaning Ratio: 105

Dam: 10@103



MATERNAL BROTHER TO 1059

TURTLE CREEK ANGUS SALE BULLS



TCAR Payweight 1060

BD: 3/14/21 Reg: 20223607 Freeze Brand: 1060

{ Basin Payweight 006S
BASIN PAYWEIGHT 1682

Sire { 21AR O Lass 7017

{ S A V Bismarck 5682

T C A R ELSA 4008

Dam { T C A R Quailie 1008

Vermilion Payweight J847
Basin Lucy 3829

HARB Pendleton 765 J H
21AR O Lass F24A

G A R Grid Maker
S A V Abigale 0451

HARB Pendleton 765 J H
T C A R Quailie 9016

Birth Wt.	WW	205 Wt.	BW	WW	YW	Milk
93	690	724	-1.1	+52	+91	+35

Weaning Ratio: 109

Dam: 6@107 Pathfinder



1060



FULL BROTHER TO 1060



TCAR Stimulus 1062

BD: 3/14/21 Reg: 20223608 Freeze Brand: 1062

{ Connealy Stimulus 8419
CONNELY STIMULUS 348

Sire { Black Cay of Conanga 5349

{ Final Answer 924 SDG

EBLINETTE 12-078

Dam { Eblinette 10-6101

H A Power Alliance 1025
Black Creesa of Conanga 5332

Papa Universe 515
Black Sweetie of Conanga

S A V Final Answer 0035
Miss Princess 605 S D G

Cole Creek Black Cedar 46P
Eblinette 06-4114

Birth Wt.	WW	205 Wt.	BW	WW	YW	Milk
97	660	693	+1.7	+68	+106	+25

Weaning Ratio: 104

Dam: 7@100



TCAR Investment 1070

BD: 3/16/21 Reg: 20223609 Freeze Brand: 1070

{ Sitz RLS Investment 12226
CENTENNIAL INVESTMENT 240

Sire { Prairie Blackbird 12-833

{ V D A R Sonny Boy 7876

BLACK ROSE 18-648

Dam { Black Rose 16-420

Sitz Investment 660Z
Sitz RLS Eisa Evergreen 1720

Connealy In Focus 4925
Prairie Blackbird 08-274

V D A R Sonny Boy 1194
V D A R Lass 0457

N F Supreme 73-3
Black Rose 14-205

Birth Wt.	WW	205 Wt.	BW	WW	YW	Milk
73	550	619	-1.7	+56	+90	+16

Weaning Ratio: 93

Dam: 2@95



TCAR None Better 1072

BD: 3/17/21 Reg: 20223610 Freeze Brand: 1072

{ Connealy Consensus 7229
RIVERBEND NONE BETTER Y095

Sire { CCC Blackbird 9101

{ T C A R Bismarck 3004

TCAR QUAILIE 5021

Dam { T C A R Quailie 8004

Connealy Consensus
Blue Lilly of Conanga 16

S S Objective T510 0T26
Riverbend Blackbird 4301

S A V Bismarck 5682
T C A R Marie 1007

S A V Net Worth 4200
Quailie 00-991

Birth Wt.	WW	205 Wt.	BW	WW	YW	Milk
94	672	714	+2.1	+72	+113	+29

Weaning Ratio: 107

Dam: 5@108 Pathfinder



1072

TURTLE CREEK ANGUS SALE BULLS

(~) TCAR None Better 1077

BD: 3/17/21 Reg: 20223611 Freeze Brand: 1077

{Connealy Consensus 7229 Connealy Consensus
Blue Lilly of Conanga 16
RIVERBEND NONE BETTER Y095
Sire {CCC Blackbird 9101 S S Objective T510 0T26
Riverbend Blackbird 4301

{TCAR Boone 0011 SAV Pioneer 7301
Queen Revette 00-577
TCAR WESTERN MOLLY 7024
Dam {Western Molly 13-991 Centennial Black Cedar 651
Western Molly 09-727

Birth Wt.	WW	205 Wt.	BW	WW	YW	Milk
55	584	637	-1.0	+53	+92	+24

Weaning Ratio: 96 Dam: 3@93 


(~) TCAR Unmistakable 1082

BD: 3/18/21 Reg: 20223612 Freeze Brand: 1082

{Sitz Unmistakable 11796 O C C Unmistakable 946U
SITZ Ellunas Elite 1374
CENTENNIAL UNMISTAKABLE 558
Sire {Miss Pauline 15-372 V D A R Black Train 1243
Miss Pauline 13-897

{1441 Resource 6804 RS SAV Resource 1441
OW Eileenmere 6804 RS
ERICA BLACK BEAUTY 18-468
Dam {Erica Black Beauty 14-857 Sitz Upward 11950
Erica Black Beauty 08-394

Birth Wt.	WW	205 Wt.	BW	WW	YW	Milk
78	554	628	+0.6	+50	+87	+23

Weaning Ratio: 94 Dam: 2@97 


(~) TCAR Holiday 1084

BD: 3/20/21 Reg: 20223622 Freeze Brand: 1084

{Deep Creek Doc Holiday 433 Tombstone 050
Deep Creek MP Lass 933
DEEP CREEK HOLIDAY 836
Sire {Millars Balerica Breeze 602 N F Alliance 348-3
Millars Balerica Breeze 4502

{Centennial Excitement 794 Basin Excitement
Prairie Bessie 07-5142
EISA BESSIE 18-503
Dam {Eisa Bessie 15-019 Centennial Focus 703
Eisa Bessie 10-582

Birth Wt.	WW	205 Wt.	BW	WW	YW	Milk
81	538	615	+0.8	+56	+90	+24

Weaning Ratio: 92 Dam: 1@92 




(~) TCAR Holiday 1086

BD: 3/20/21 Reg: 20223613 Freeze Brand: 1086

{Deep Creek Doc Holiday 433 Tombstone 050
Deep Creek MP Lass 933
DEEP CREEK HOLIDAY 836
Sire {Millars Balerica Breeze 602 N F Alliance 348-3
Millars Balerica Breeze 4502

{Spring Cove Paygrade 5064 Basin Payweight 1682
Spring Cove Ella 064
TCAR WINNIE BLACKBIRD 8017
Dam {TCAR Winnie Blackbird 2001 SAV Final Answer 0035
TCAR Winnie Blackbird 0004

Birth Wt.	WW	205 Wt.	BW	WW	YW	Milk
86	656	743	+2.3	+77	+125	+28

Weaning Ratio: 112 Dam: 2@103 



TURTLE CREEK ANGUS SALE BULLS

(u) TCAR Mirror Image 1088

BD: 3/21/21 Reg: 20223614 Freeze Brand: 1088

{ W R A Mirror Image T10
VDAR MIRROR IMAGE 2047
 Sire { V D A R Lass 5880

{ Centennial Right Time 786
BLOSSOM 14-749
 Dam { Blossom 07-3103

Birth Wt.	WW	205 Wt.	BW	WW	YW	Milk
84	598	646	-0.3	+49	+79	+27

Weaning Ratio: 97 Dam: 5@91 


(u) TCAR 566 Winston 1089

BD: 3/22/21 Reg: 20223624 Freeze Brand: 1089

{ V D A R Winston 2165
CENTENNIAL WINSTON 566
 Sire { Bandolier Fanny 15-748

{ Centennial Black Cedar 651
WESTERN LADY 919
 Dam { Western Lady 09-216

Birth Wt.	WW	205 Wt.	BW	WW	YW	Milk
85	630	684	+2.9	+64	+103	+16

Weaning Ratio: 103 Dam: 6@100 


(u) TCAR 741 Cedar Wind 1090

BD: 3/22/21 Reg: 20223615 Freeze Brand: 1090

{ VDAR Cedar Wind 7000
CENTENNIAL CEDAR WIND 741
 Sire { Eisa Bessie 17-254

{ Centennial Excitement 083
PRAIRIE BLACKBIRD 18-526
 Dam { Prairie Blackbird 15-248

Birth Wt.	WW	205 Wt.	BW	WW	YW	Milk
78	576	662	+0.3	+53	+95	+32

Weaning Ratio: 99 Dam: 2@95 


(u) TCAR Holiday 1096

BD: 3/27/21 Reg: 20223616 Freeze Brand: 1096

{ Deep Creek Doc Holiday 433
DEEP CREEK HOLIDAY 836
 Sire { Millars Balerica Breeze 602

{ Centennial Black Cedar 651
PLAINS CREE 13-9103
 Dam { Plains Cree 09-768

Birth Wt.	WW	205 Wt.	BW	WW	YW	Milk
96	656	727	+2.1	+68	+120	+32

Weaning Ratio: 109 Dam: 7@98 


(u) TCAR 155 Resource 1098

BD: 3/28/21 Reg: 20223625 Freeze Brand: 1098

{ 1441 Resource 6804 RS
CENTENNIAL RESOURCE 155
 Sire { Bandolier Eblinette 11-862

{ Apex Windy 078
HORSE BUTTE LASSIE 13-655
 Dam { Horse Butte Lassie 06-306

Birth Wt.	WW	205 Wt.	BW	WW	YW	Milk
78	532	592	+0.3	+47	+83	+24

Weaning Ratio: 89 Dam: 7@98 


(u) TCAR Holiday 1101

BD: 3/30/21 Reg: 20223617 Freeze Brand: 1101

{ Deep Creek Doc Holiday 433
DEEP CREEK HOLIDAY 836
 Sire { Millars Balerica Breeze 602

{ Final Answer 924 SDG
PRAIRIE ERICA 13-124
 Dam { Prairie Erica 11-5125

Birth Wt.	WW	205 Wt.	BW	WW	YW	Milk
85	608	683	+1.2	+63	+98	+29

Weaning Ratio: 103 Dam: 5@100 



TURTLE CREEK ANGUS SALE BULLS



TCAR Holiday 1103

BD: 3/30/21 Reg: 20223618 Freeze Brand: 1103

{ Deep Creek Doc Holiday 433 Tombstone 050
 Deep Creek MP Lass 933
DEEP CREEK HOLIDAY 836
 Sire { Millars Balerica Breeze 602 N F Alliance 348-3
 Millars Balerica Breeze 4502

{ V D A R Really Windy 4097 A A R Really Windy 1205
 V D A R Blackbird 2031
ERICA 12-020
 Dam { Erica 10-589 Centennial Improvement 8105
 Erica 05-317

Birth Wt.	WW	205 Wt.	BW	WW	YW	Milk
80	552	620	+0.2	+56	+84	+38

Weaning Ratio: 93 Dam: 7@99



1110



1116



TCAR Holiday 1105

BD: 3/31/21 Reg: 20223619 Freeze Brand: 1105

{ Deep Creek Doc Holiday 433 Tombstone 050
 Deep Creek MP Lass 933
DEEP CREEK HOLIDAY 836
 Sire { Millars Balerica Breeze 602 N F Alliance 348-3
 Millars Balerica Breeze 4502

{ S A V Net Worth 4200 S A V 8180 Traveler 004
 S A V May 2410
T C A R MISS PAULINE 0001
 Dam { Miss Pauline 00-263 Centennial Traveler 724
 Miss Pauline 92-817

Birth Wt.	WW	205 Wt.	BW	WW	YW	Milk
98	558	649	+3.1	+64	+111	+25

Weaning Ratio: 97 Dam: 8@103



TCAR Holiday 1110

BD: 4/2/21 Reg: 20223620 Freeze Brand: 1110

{ Deep Creek Doc Holiday 433 Tombstone 050
 Deep Creek MP Lass 933
DEEP CREEK HOLIDAY 836
 Sire { Millars Balerica Breeze 602 N F Alliance 348-3
 Millars Balerica Breeze 4502

{ Centennial Black Cedar 651 Cole Creek Black Cedar 46P
 Reva Eblinette 06-283
PRAIRIE BLACKBIRD 12-931
 Dam { Prairie Blackbird 09-340 E A Gridiron 701
 Prairie Blackbird 03-748

Birth Wt.	WW	205 Wt.	BW	WW	YW	Milk
78	552	629	-0.3	+49	+73	+26

Weaning Ratio: 94 Dam: 8@102



TCAR 155 Resource 1116

BD: 4/19/21 Reg: 20223626 Freeze Brand: 1116

{ 1441 Resource 6804 RS S A V Resource 1441
 O W Eileenmere 6804 RS
CENTENNIAL RESOURCE 155
 Sire { Bandolier Eblinette 11-862 Centennial Prime 479
 Bardolier Eblinette 08-3170

{ Connealy Stimulus 348 Connealy Stimulus 8419
 Black Cay of Conanga 5349
PRAIRIE CREEOLA 13-318
 Dam { Prairie Creeola 03-579 W C 4480 Improvement 1C09
 Prairie Creeola 95-398

Birth Wt.	WW	205 Wt.	BW	WW	YW	Milk
90	558	691	+3.1	+71	+119	+13

Weaning Ratio: 104 Dam: 7@99



A big thank you to our great friends & neighbors
 for sale prep help!

REGISTERED HEIFERS



TCAR Eulima 1001

BD: 2/17/21 Reg: 20258368 Freeze Brand: 1001

{ Baldrige 38 Special EF Commando 1366
DEEP CREEK 38 SPECIAL 900 Baldrige Isabel Y69
 Sire { Deep Creek Rev Princess 742 Deep Creek Revolution 417
 Deep Creek Acc Princess 542

{ Centennial Winston 566 V D A R Winston 2165
EULIMA 19-654 Bandolier Fanny 15-748
 Dam { Eulima 16-475 Centennial Supreme 312
 Western Eulima 14-924

Birth Wt.	WW	205 Wt.	BW	WW	YW	Milk
62	530	567	-2.1	+55	+88	+32

Weaning Ratio: 97 Dam: 1@97



TCAR Patty 1014

BD: 3/5/21 Reg: 20258374 Freeze Brand: 1014

{ W R A Mirror Image T10 H A Image Maker 0415
VDAR MIRROR IMAGE 2047 W R A Eileen Bar 115P
 Sire { V D A R Lass 5880 KA Black Cedar 080
 V D A R Lass 3106

{ V D A R Right Time 3045 Leachman Right Time
PATTY 11-746 V D A R Lass 5186
 Dam { Patty 07-366 Centennial Windy 150
 Patty 03-992

Birth Wt.	WW	205 Wt.	BW	WW	YW	Milk
81	542	569	-1.4	+35	+60	+23

Weaning Ratio: 98 Dam: 9@100



TCAR Prairie Blackbird 1034

BD: 3/11/21 Reg: 20258381 Freeze Brand: 1034

{ Connealy Countdown Connealy Final Solution
COUNTDOWN 6979 RS Entama of Conanga 140
 Sire { 8218 Cons Erica 6979 RS Consensus 8218 RS
 9291 Id Erica 4788 RS

{ Centennial Upward 589 Sitz Upward 11950
PRAIRIE BLACKBIRD 15-248 Erica 05-317
 Dam { Prairie Blackbird 12-929 Centennial Supreme 880
 Prairie Blackbird 09-321

Birth Wt.	WW	205 Wt.	BW	WW	YW	Milk
87	594	615	+1.0	+66	+123	+19

Weaning Ratio: 105 Dam: 5@97



TCAR Miss Pauline 1057

BD: 3/13/21 Reg: 20258388 Freeze Brand: 1057

{ LD Capitalist 316 Connealy Capitalist 028
PINE CREEK CAPITALIST 9115 LD Dixie Erica 2053
 Sire { PCAR Barb Nell 6086 Sitz Consensus 12313
 PCAR Barb Nell 0015

{ Basin Payweight 1682 Basin Payweight 006S
TCAR MISS PAULINE 9008 21AR O Lass 7017
 Dam { Miss Pauline 13-897 Connealy Stimulus 348
 Miss Pauline 08-6127

Birth Wt.	WW	205 Wt.	BW	WW	YW	Milk
63	454	531	-1.1	+62	+106	+35

Weaning Ratio: 91 Dam: 1@91



TCAR Prairie Blackbird 1058

BD: 3/14/21 Reg: 20258389 Freeze Brand: 1058

{ Connealy Stimulus 8419 H A Power Alliance 1025
CONNEALY STIMULUS 348 Black Creeza of Conanga 5332
 Sire { Black Cay of Conanga 5349 Papa Universe 515
 Black Sweetie of Conanga

{ Centennial Gridiron 599 E A Gridiron 701
PRAIRIE BLACKBIRD 12-475 Eileenmere Lady 05-357
 Dam { Prairie Blackbird 04-134 J F Alliance 748-2
 Prairie Blackbird 00-929

Birth Wt.	WW	205 Wt.	BW	WW	YW	Milk
88	528	552	+2.2	+45	+73	+20

Weaning Ratio: 95 Dam: 8@98



TCAR Western Hilda 1064

BD: 3/15/21 Reg: 20258391 Freeze Brand: 1064

{ Sitz Unmistakable 11796 O C C Unmistakable 946U
CENTENNIAL UNMISTAKABLE 558 SITZ Eilunna Elite 1374
 Sire { Miss Pauline 15-372 V D A R Black Train 1243
 Miss Pauline 13-897

{ V D A R Sonny Boy 7876 V D A R Sonny Boy 1194
WESTERN HILDA 18-608 V D A R Lass 0457
 Dam { Western Hilda 16-117 V D A R Black Train 1243
 Western Hilda 11-451

Birth Wt.	WW	205 Wt.	BW	WW	YW	Milk
75	532	591	+1.4	+49	+82	+28

Weaning Ratio: 101 Dam: 2@100



TCAR Eblinette 1069

BD: 3/16/21 Reg: 20258393 Freeze Brand: 1069

{ W R A Mirror Image T10 H A Image Maker 0415
VDAR MIRROR IMAGE 2047 W R A Eileen Bar 115P
 Sire { V D A R Lass 5880 KA Black Cedar 080
 V D A R Lass 3106

{ Centennial Gridiron 599 E A Gridiron 701
EBLINETTE 12-716 Eileenmere Lady 05-357
 Dam { Eblinette 07-092 Woodlawn New Precision 304
 Eblinette 00-730

Birth Wt.	WW	205 Wt.	BW	WW	YW	Milk
81	530	559	-0.1	+45	+77	+26

Weaning Ratio: 96 Dam: 8@93



TCAR Pauline 1093

BD: 3/24/21 Reg: 20258401 Freeze Brand: 1093

{ 1441 Resource 6804 RS S A V Resource 1441
CENTENNIAL RESOURCE 836 OW Eileenmere 6804 RS
 Sire { Centennial Hero 08-288/ Crook Mt Hero 580
 Erica 02-550

{ V D A R Winston 2165 V D A R Churchill 1063
PAULINE 17-558 V D A R Lass 3114
 Dam { Miss Pauline 15-372 V D A R Black Train 1243
 Miss Pauline 13-897

Birth Wt.	WW	205 Wt.	BW	WW	YW	Milk
71	484	540	+0.6	+51	+94	+18

Weaning Ratio: 93 Dam: 3@92

REGISTERED HEIFERS



TCAR Eiben 1097

BD: 3/28/21 Reg: 20258402 Freeze Brand: 1097

{ Sitz RLS Investment 12226 Sitz Investment 660Z
Sitz RLS Elsa Evergreen 1720
CENTENNIAL INVESTMENT 240
Sire { Prairie Blackbird 12-833 Connealy In Focus 4925
Prairie Blackbird 08-274

{ 1441 Resource 6804 RS S A V Resource 1441
OW Eileenmere 6804 RS
EIBEN 18-032
Dam { Eileen 10-680 Centennial Improvement 581
Eileen 06-416

Birth Wt.	WW	205 Wt.	BW	WW	YW	Milk
70	486	571	-0.8	+61	+98	+22

Weaning Ratio: 98

Dam: 2@99



TCAR Anna 1114

BD: 4/6/21 Reg: 20258408 Freeze Brand: 1114

{ Deep Creek Doc Holiday 433 Tombstone 050
Deep Creek MP Lass 933
DEEP CREEK HOLIDAY 836
Sire { Millars Balerica Breeze 602 N F Alliance 348-3
Millars Balerica Breeze 4502

{ Basin Payweight 1682 Basin Payweight 006S
21AR O Lass 7017
T C A R ANNA 5010
Dam { T C A R Quaille 2016 Connealy Stimulus 348
Quaille 00-991

Birth Wt.	WW	205 Wt.	BW	WW	YW	Milk
77	432	496	+0.0	+49	+89	+32

Weaning Ratio: 85

Dam: 5@98



TCAR Bandolier Queen 1115

BD: 4/18/21 Reg: 20258409 Freeze Brand: 1115

{ VDAR Sonny Boy 7876 V D A R Sonny Boy 1194
V D A R Lass 0457
CENTENNIAL SONNY BOY 554
Sire { Miss Sally 15-362 V D A R Black Train 1243
Miss Sally 13-781

{ Centennial Supreme 9100 Centennial Supreme 880
Eileenmere Lady 09-787
BANDOLIER QUEEN 16-996
Dam { Bandolier Queen 09-782 Centennial Hero 7002
Bandolier Queen 07-561

Birth Wt.	WW	205 Wt.	BW	WW	YW	Milk
91	428	517	+2.1	+53	+89	+17

Weaning Ratio: 89

Dam: 3@93



TCAR Winnie Blackbird 1118

BD: 4/25/21 Reg: 20258410 Freeze Brand: 1118

{ Deep Creek Doc Holiday 433 Tombstone 050
Deep Creek MP Lass 933
DEEP CREEK HOLIDAY 836
Sire { Millars Balerica Breeze 602 N F Alliance 348-3
Millars Balerica Breeze 4502

{ Musgrave Aviator Koupals B&B Identity
MCATL Forever Lady 1429-138
TCAR WINNIE BLACKBIRD 8002
Dam { TCAR Winnie Blackbird 6020 Basin Payweight 1682
TCAR Winnie Blackbird 0004

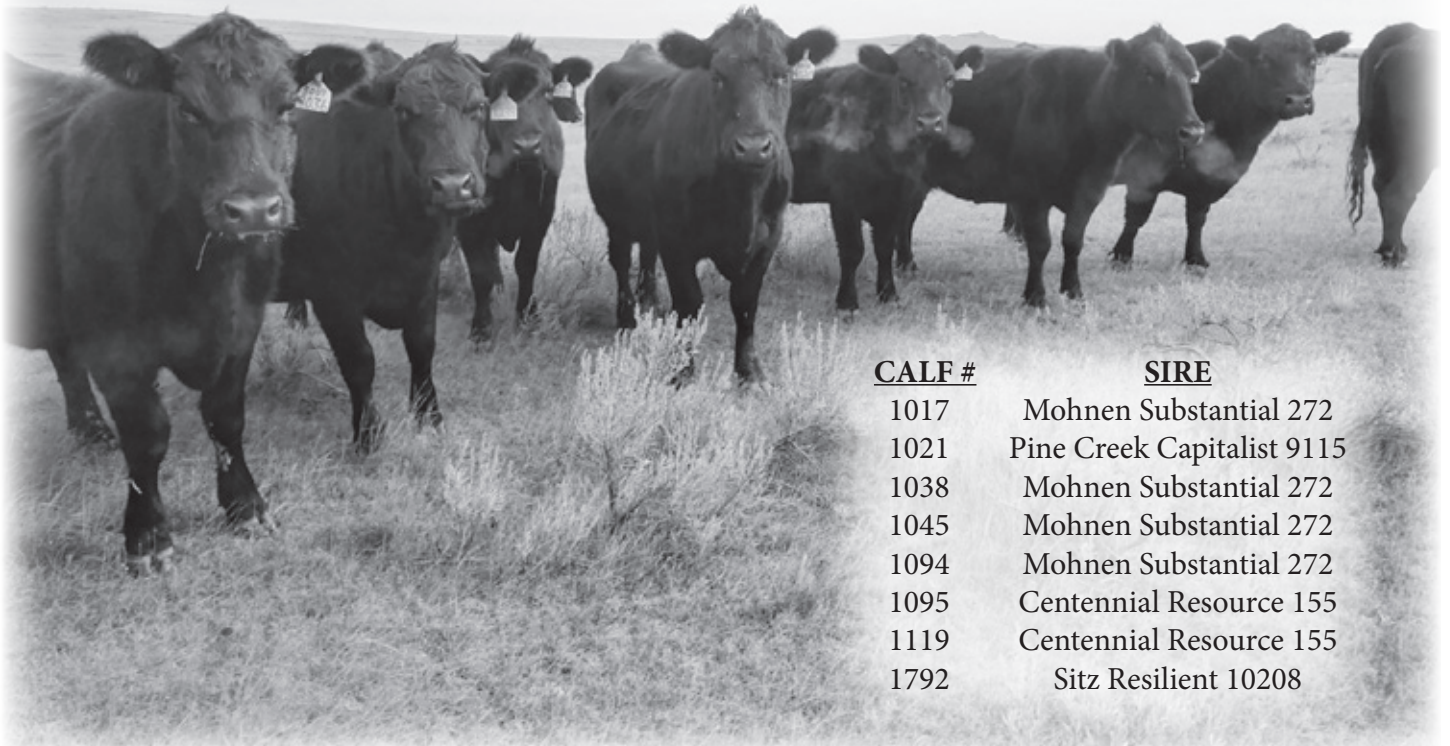
Birth Wt.	WW	205 Wt.	BW	WW	YW	Milk
80	482	643	+2.6	+74	+124	+30

Weaning Ratio: 110

Dam: 2@104



COMMERCIAL HEIFERS



CALF

SIRE

1017	Mohnen Substantial 272
1021	Pine Creek Capitalist 9115
1038	Mohnen Substantial 272
1045	Mohnen Substantial 272
1094	Mohnen Substantial 272
1095	Centennial Resource 155
1119	Centennial Resource 155
1792	Sitz Resilient 10208

CENTENNIAL SALE BULLS



MATERNAL BROTHER TO 117



MATERNAL BROTHER TO 334



61

Centennial High Point 117

BD: 3/7/21 Reg: 20191425 Freeze Brand: 1117

{ High Point Ring of Fire 5071

JK HIGH POINT 745

Sire { J K Blackbird 408

{ N F Tracker 667

WESTERN HILDA 11-451

Dam { Western Hilda 04-8114

Vin-Mar Johnny Cash 3513
High Point Blackbird 3009

S A Broadside 1411
J K Ms Blackbird 018

WMR Tracker 003
N F Pridemere 45199

Centennial Cornhusker 135
Western Hilda 98-728

Birth Wt.	WW	205 Wt.	BW	WW	YW	Milk
81	614	650	-1.2	+50	+84	+28

Weaning Ratio: 94

Dam: 9@103

ANGUS

61

Centennial High Point 334

BD: 3/7/21 Reg: 20191429 Freeze Brand: 1334

{ High Point Ring of Fire 5071

JK HIGH POINT 745

Sire { J K Blackbird 408

{ Sitz Upward 11950

LADY SUPREME 13-421

Dam { Lady Supreme 04-671

Vin-Mar Johnny Cash 3513
High Point Blackbird 3009

S A Broadside 1411
J K Ms Blackbird 018

Sitz Upward 307R
Sitz Rachel 788

Centennial Vision 7009
Lady Supreme 96-335

Birth Wt.	WW	205 Wt.	BW	WW	YW	Milk
92	720	736	-0.9	+73	+132	+23

Weaning Ratio: 107

Dam: 7@103

ANGUS

61

Centennial High Point 362

BD: 3/11/21 Reg: 20191431 Freeze Brand: 1362

{ High Point Ring of Fire 5071

JK HIGH POINT 745

Sire { J K Blackbird 408

{ Centennial Gridiron 599

MISS SALLY 13-781

Dam { Miss Sally 07-556

Vin-Mar Johnny Cash 3513
High Point Blackbird 3009

S A Broadside 1411
J K Ms Blackbird 018

E A Gridiron 701
Eileenmere Lady 05-357

Centennial Hero 7002
Miss Sally 05-169

Birth Wt.	WW	205 Wt.	BW	WW	YW	Milk
96	666	691	+0.0	+54	+95	+24

Weaning Ratio: 100

Dam: 7@107 Patfinder

ANGUS

61

Centennial Resilient 405

BD: 3/12/21 Reg: 20230363 Freeze Brand: 1405

{ Sitz Stellar 726D

SITZ RESILIENT 10208

Sire { Sitz Miss Burgess 1856

{ Centennial Windy 058

DAKOTA BEAUTY 14-053

Dam { Dakota Beauty 10-819

Mohnen Substantial 272
SITZ Pride 200B

Sitz Top Game 561X
Sitz Miss Burgess 4381

V D A R Really Windy 4097
Black Blossom 10-847

W C 4480 Improvement 1C09
Dakota Beauty 08-142

Birth Wt.	WW	205 Wt.	BW	WW	YW	Milk
90	674	702	+1.6	+81	+123	+28

Weaning Ratio: 102

Dam: 6@102

ANGUS



CENTENNIAL SALE BULLS

61 Centennial Resilient 431

BD: 3/7/21 Reg: 20276407 Freeze Brand: 1431

{ Sitz Stellar 726D

Mohnen Substantial 272
SITZ Pride 200B

SITZ RESILIENT 10208

Sire { Sitz Miss Burgess 1856

Sitz Top Game 561X
Sitz Miss Burgess 4381

{ V D A R Really Windy 4097

A A R Really Windy 1205
VDAR Blackbird 2031

PRAIRIE EBLINETTE 14-244

Dam { Prairie Eblinette 12-888

WMR Windy 340
Prairie Eblinette 08-648

Birth Wt.	WW	205 Wt.	BW	WW	YW	Milk
85	698	714	-0.3	+71	+128	+25

Weaning Ratio: 103

Dam: 6@103



61 Centennial Investment 444

BD: 3/8/21 Reg: 20191432 Freeze Brand: 1444

{ Sitz Investment 660Z

Connealy Final Product
Sitz Ellunas Elite 656T

SITZ RLS INVESTMENT 12226

Sire { Sitz RLS Eisa Evergreen 1720

Sitz Upward 307R
Sitz RLS Eisa Evergreen 2375

{ Centennial Black Cedar 651

Cole Creek Black Cedar 46P
Reva Eblinette 06-283

BLACKBIRD QUEEN 14-3106

Dam { Blackbird Queenie 03-516

Centennial Lucys Boy 704
Blackbird Queenie 95-037

Birth Wt.	WW	205 Wt.	BW	WW	YW	Milk
90	672	690	+0.2	+59	+107	+24

Weaning Ratio: 100

Dam: 6@105 Pathfinder



MATERNAL BROTHER TO 453

61 Centennial High Point 453

BD: 3/3/21 Reg: 20191433 Freeze Brand: 1453

{ High Point Ring of Fire 5071

Vin-Mar Johnny Cash 3513
High Point Blackbird 3009

JK HIGH POINT 745

Sire { J K Blackbird 408

S A Broadside 1411
J K Ms Blackbird 018



{ CLF Freedom 03X

TC Freedom 104
M A Miss Burgess 508-101

QUEEN BLACKBIRD 14-637

Dam { Queen Blackbird 06-211

Connealy Danny Boy
Queen Blackbird 02-488

Birth Wt.	WW	205 Wt.	BW	WW	YW	Milk
77	604	609	-1.0	+58	+107	+21

Weaning Ratio: 88

Dam: 6@100



• Radio Auction Bull (Hugh sell on KBHB every spring)



61 Centennial High Point 455

BD: 3/5/21 Reg: 20191434 Freeze Brand: 1455

{ High Point Ring of Fire 5071

Vin-Mar Johnny Cash 3513
High Point Blackbird 3009

JK HIGH POINT 745

Sire { J K Blackbird 408

S A Broadside 1411
J K Ms Blackbird 018

{ CLF Freedom 03X

TC Freedom 104
M A Miss Burgess 508-101

WESTERN LADY 14-670

Dam { Western Lady 06-3108

Centennial Strategist 839
Western Lady 03-541

Birth Wt.	WW	205 Wt.	BW	WW	YW	Milk
86	714	725	+0.7	+83	+146	+21

Weaning Ratio: 105

Dam: 6@106 Pathfinder



CENTENNIAL SALE BULLS



61

Centennial Winston 478

BD: 3/7/21 Reg: 20262449 Freeze Brand: 1478

{ V D A R Winston 2165
CENTENNIAL WINSTON 547

Sire { Eblinette 15-339

V D A R Churchill 1063
V D A R Lass 3114

V D A R Black Train 1243
Eblinette 13-554

{ Centennial Gridiron 599
PRAIRIE BLACKBIRD 14-929

Dam { Prairie Blackbird 09-321

E A Gridiron 701
Eileenmere Lady 05-357

Centennial Golden Freedom
Prairie Blackbird 03-624

Birth Wt.	WW	205 Wt.	BW	WW	YW	Milk
91	598	610	-1.8	+34	+53	+26

Weaning Ratio: 97

Dam: 6@105

ANGUS CS

61

Centennial Winston 575

BD: 3/12/21 Reg: 20191400 Freeze Brand: 1575

{ V D A R Winston 2165

CENTENNIAL WINSTON 547

Sire { Eblinette 15-339

V D A R Churchill 1063
V D A R Lass 3114

V D A R Black Train 1243
Eblinette 13-554

{ Centennial Focus 703

WESTERN BARBARA 913

Dam { Western Barbara 09-195

Centennial Focus 916
Eblinette Lass 97-623

S A V Final Answer 0035
Western Barbara 00-839

Birth Wt.	WW	205 Wt.	BW	WW	YW	Milk
94	676	704	+1.1	+53	+92	+23

Weaning Ratio: 102

Dam: 5@102

ANGUS CS

61

Centennial Investment 724

BD: 3/7/21 Reg: 20191411 Freeze Brand: 1724

{ Sitz Investment 660Z

SITZ RLS INVESTMENT 12226

Sire { Sitz RLS Eisa Evergreen 1720

Connealy Final Product
Sitz Ellunas Elite 656T

Sitz Upward 307R
Sitz RLS Eisa Evergreen 2375

{ Centennial Windy 083

BLOSSOM 17-141

Dam { Blossom 11-749

V D A R Really Windy 4097
Dakota Blackbird 10-6154

V D A R Right Time 3045
Blossom 07-3103

Birth Wt.	WW	205 Wt.	BW	WW	YW	Milk
90	590	618	+2.2	+58	+95	+15

Weaning Ratio: 91

Dam: 3@100

ANGUS CS

61

Centennial Resilient 733

BD: 3/12/21 Reg: 20191416 Freeze Brand: 1733

{ Sitz Stellar 726D

SITZ RESILIENT 10208

Sire { Sitz Miss Burgess 1856

Mohnen Substantial 272
SITZ Pride 200B

Sitz Top Game 561X
Sitz Miss Burgess 4381

{ Centennial Really Windy 070

EISA BESSIE 17-211

Dam { Eisa Bessie 12-528

Centennial Windy 058
Eblinette 10-658

V D A R Really Windy 4097
Eisa Bessie 05-769

Birth Wt.	WW	205 Wt.	BW	WW	YW	Milk
96	714	759	+0.9	+81	+139	+29

Weaning Ratio: 112

Dam: 3@110

ANGUS CS



CENTENNIAL SALE BULLS

61

Centennial Resilient 739

BD: 3/15/21 Reg: 20191417 Freeze Brand: 1739

{ Sitz Stellar 726D

Mohnen Substantial 272
SITZ Pride 200B

SITZ RESILIENT 10208

Sire { Sitz Miss Burgess 1856

Sitz Top Game 561X
Sitz Miss Burgess 4381

{ 1441 Resource 6804 RS

S A V Resource 1441
OW Eileenmere 6804 RS

PRAIRIE BLACKBIRD 17-248

Dam { Prairie Blackbird 12-929

Centennial Supreme 880
Prairie Blackbird 09-321

Birth Wt.	WW	205 Wt.	BW	WW	YW	Milk
82	614	662	-0.2	+57	+106	+24

Weaning Ratio: 97

Dam: 3@104



61

Centennial Resilient 788

BD: 3/10/21 Reg: 20276408 Freeze Brand: 1788

{ Sitz Stellar 726D

Mohnen Substantial 272
SITZ Pride 200B

SITZ RESILIENT 10208

Sire { Sitz Miss Burgess 1856

Sitz Top Game 561X
Sitz Miss Burgess 4381

{ V D A R Winston 2165

V D A R Churchill 1063
V D A R Lass 3114

WESTERN BARBARA 17-520

Dam { Western Barbara 15-215

Centennial Upward 589
Western Barbara 12-614

Birth Wt.	WW	205 Wt.	BW	WW	YW	Milk
83	664	701	-2.5	+56	+88	+24

Weaning Ratio: 98

Dam: 3@103



61

Centennial Unmistakable 870

BD: 3/17/21 Reg: 20262450 Freeze Brand: 1870

{ Sitz Unmistakable 11796

O C C Unmistakable 946U
SITZ Ellunas Elite 1374

CENTENNIAL UNMISTAKABLE 558

Sire { Miss Pauline 15-372

V D A R Black Train 1243
Miss Pauline 13-897

{ VDAR Sonny Boy 7876

V D A R Sonny Boy 1194
V D A R Lass 0457

EBLINETTE 18-605

Dam { Eblinette 16-062

Basin Excitement
Bardolier Eblinette 10-869

Birth Wt.	WW	205 Wt.	BW	WW	YW	Milk
93	648	723	+3.1	+71	+135	+26

Weaning Ratio: 112

Dam: 2@107



Created by Angus Genetics Inc. (AGI) and powered by Neogen GeneSeek, our sale cattle have been tested with the first DNA profile designed specifically for Angus cattle, Angus GSSM.

Each marker is intentionally chosen from the Angus genome to drive the Angus breed into the future. It offers maximum accuracy for genomically enhanced EPDs at great value. Testing heifer and bull calves ultimately allows you to reap the benefits of faster genetic gain in your commercial herd. With Angus GS, it's all about you, our customer.

Trait	Progeny Equivalents
Calving Ease Direct (CED)	26
Birth Weight (BW)	23
Weaning Weight (WW)	27
Yearling Weight (YW)	23
Dry Matter Intake (DMI)	12
Yearling height (YH)	17
Scrotal Circumference (SC)	15
Docility (DOC)	12
Claw Set (CLAW)	10
Foot Angle (ANGLE)	10
Heifer Pregnancy (HP)	17
Calving Ease Maternal (CEM)	20
Milk	36
Mature Weight (MW)	15
Mature Height (MH)	9
Carcass Weight (CW)	15
Carcass Marbling (MARB)	11
Carcass Ribeye (RE)	17
Carcass Fat (FAT)	14



Make Angus GS work for you at Angus.org/AGI/AngusGS or contact your Neogen GeneSeek representative at (402) 435-0665.

TURTLE CREEK ANGUS

Ty & Kari Dieters
16803 Stoneville Road
Faith, SD 57626

FIRST CLASS MAIL
U.S. POSTAGE
PAID
PHILIP, SD
PERMIT NO. 20

Production Sale
FRIDAY, APRIL 8, 2022
1:00 PM MST • AT THE RANCH,
FAITH, SOUTH DAKOTA

Address Service Requested

TCAR None Better 1072



TCAR Payweight 1041

